

TOPANGA LAGOON RESTORATION PROJECT PUBLIC OUTREACH MEETING

...will begin at 10ish am

**Email Questions to:
TopangaLagoonRestoration@gmail.com**



BEFORE WE BEGIN... A LITTLE HOUSEKEEPING



TOPANGA LAGOON RESTORATION PROJECT

HELP US IMAGINE
THE FUTURE

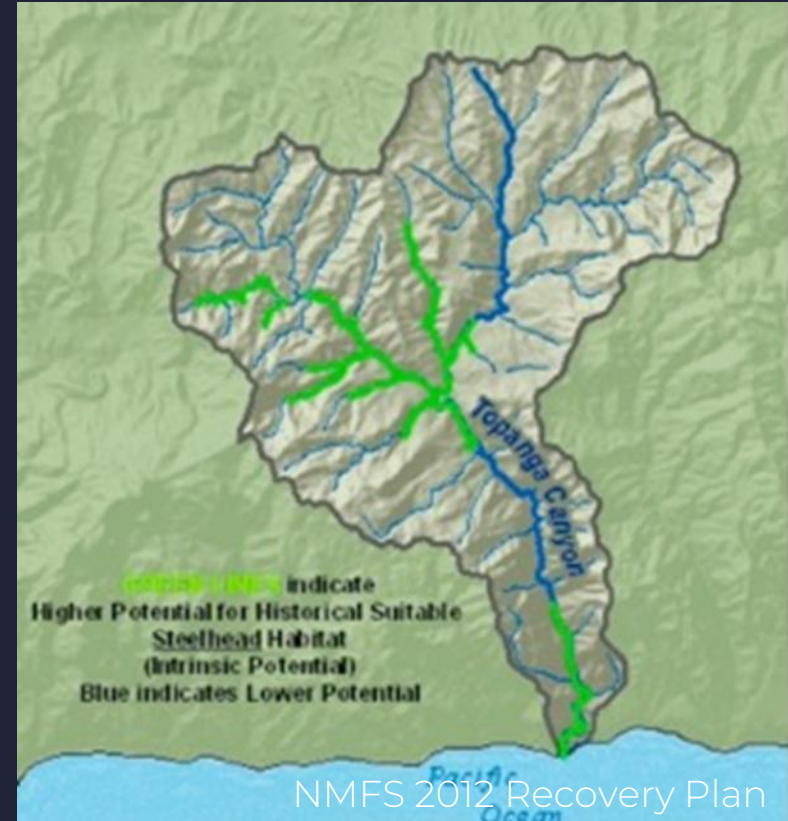
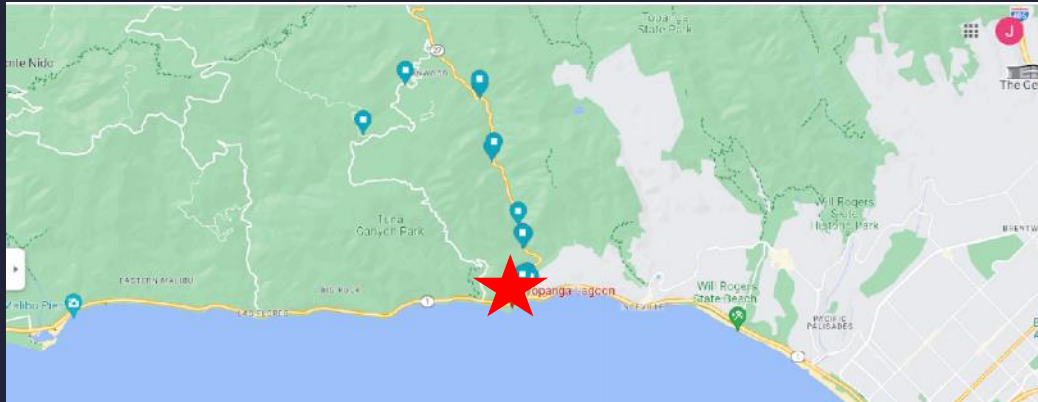
JUNE 17, 2023



RCDSMM

TOPANGA LAGOON SNAPSHOT

- E Gateway to Santa Monica Mountains & Beach
- Topanga Creek Watershed
- W of Topanga Canyon Blvd/Hwy 1





Project Area



Surrounding
Parcels/Private

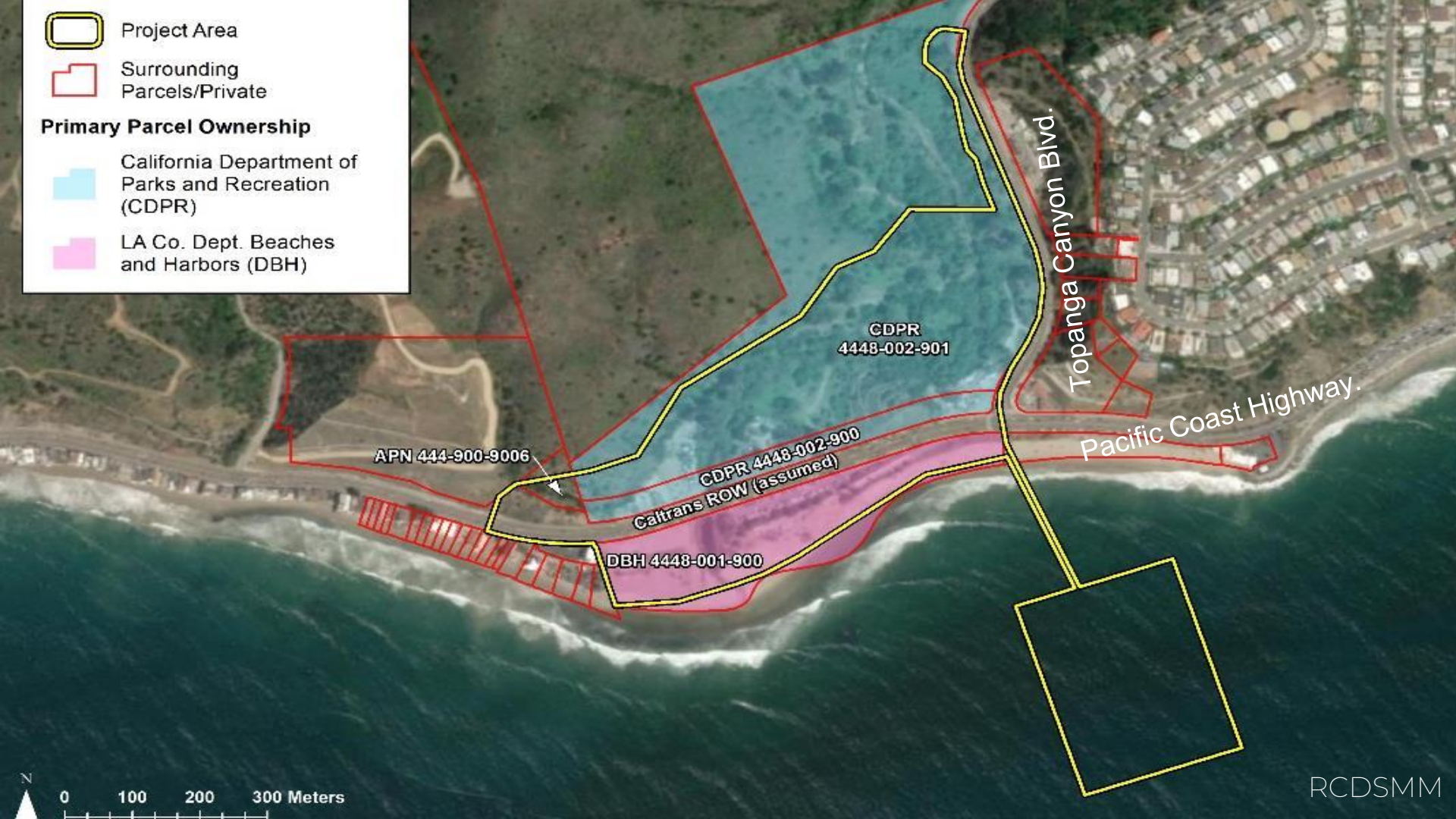
Primary Parcel Ownership



California Department of
Parks and Recreation
(CDPR)



LA Co. Dept. Beaches
and Harbors (DBH)



CDPR
4448-002-901

APN 444-900-9006

CDPR 4448-002-900
Caltrans ROW (assumed)

DBH 4448-001-900

Topanga Canyon Blvd.
Pacific Coast Highway.

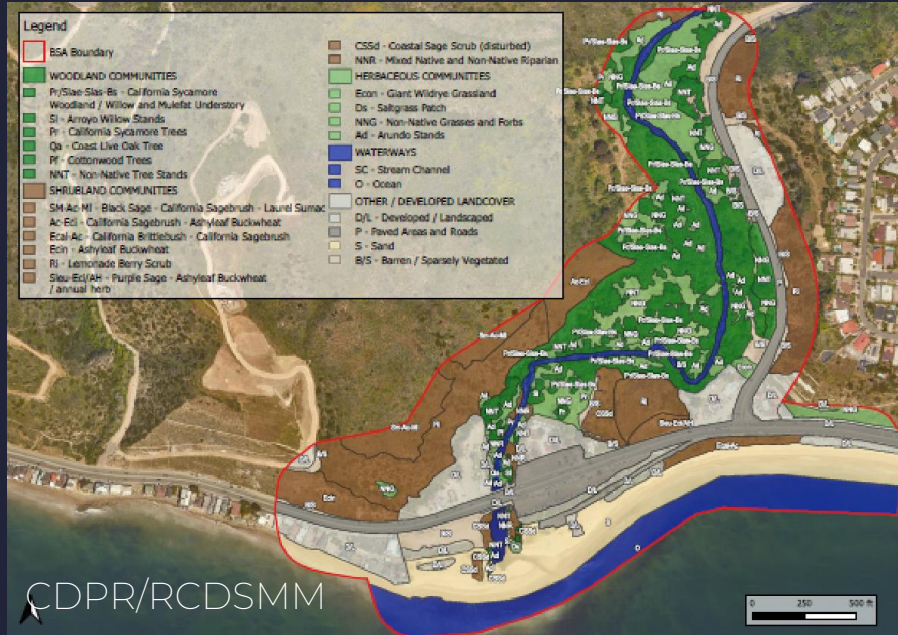
0 100 200 300 Meters

RCDSMM



PROJECT NEED: DISAPPEARING WETLANDS

DISAPPEARING & DAMAGED ECOSYSTEMS



Many Sensitive Ecosystems



Chance to Repair Damage



Topanga Lagoon 1916

Randy Young Collection



Topanga Lagoon 1933

Benjamin & Gladys Thomas Air Photo Archive



Topanga Lagoon 1939

Benjamin & Gladys Thomas Air Photo Archive



Lower Topanga Lagoon

Topanga Lagoon

Topanga Lagoon Today

Google Earth

A LAST SANCTUARY FOR ENDANGERED FISH

Tidewater Goby

- Prefers freshwater lagoon
- Healthy population in Topanga
- Need refuge from storm flows

Steelhead Trout

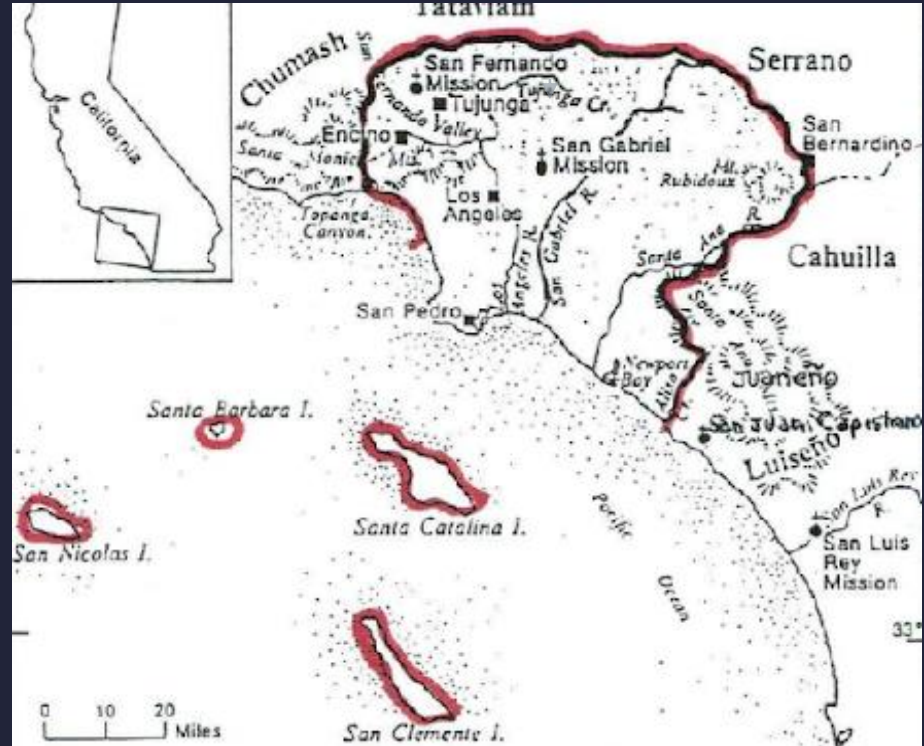
- Anadromous life cycle
- Key to species survival
- Only reproducing population in SMM
- Need for improved fish passage



CULTURAL RESOURCES PROTECTION/INTERPRETATION

- Protect Gabrielino/Tongva Cultural Sites
- How Honor & Interpret *Topaa'nga* Heritage at Gateway Corner

GABRIELENO (TONGVA)
BAND OF MISSION INDIANS



CULTURAL RESOURCES

- Topanga Ranch Motel:
National Register of
Historic Places
Eligible
- Determine Future of
Historic-Period
Structures & Features



RECREATION/COASTAL ACCESS NEEDS

- Popular Beach, Limited Visitor Services
- Limited Access to Lower Topanga State Park



EMERGENCY SERVICES BARRIERS



NEED EASIER ACCESS ROUTES



NEED FOR UNIFIED PARKING PLAN

all of this is existing concession parking-
sometimes used as
opportunistic fee
beach parking by
concessionaire

existing concession
parking (20 spaces)

existing concession
parking (22 spaces)

EXISTING STORM DAMAGE



Beach Loss



Structures Threatened

SEA LEVEL RISE THREATS

USGS CoSMoS 3.2ft (1m) SLR

- Annual Storm, Maximum Inundation
- Annual Storm, Minimum Inundation



MOFFATT & NICHOL/COSMOS

WE HEARD YOUR VOICES!

- 1999-2004 Initial Design, PSR/PDS
- 2012 Topanga General Plan
- 2020, 2021 Public Charrettes
- 2022 Public EIR Scoping Mtg
- 2023 Project Website: rcdsmm.org/topanga-lagoon-restoration/



KEY PUBLIC COMMENTS

- Maximize Restoration & Native Habitats, Wetted/Riparian Focus
- Plan for SLR: Relocate Lifeguard Building/Infrastructure Inland
- Improve Lagoon Function, Endgrd Fish Habitat & Water Quality
- Retain Surf Break
- Highlight Cultural Resources: Native American History - Present
- Preserve Visitor Services (Reel Inn, Cholada, Wylie's Bait Shop)
- Decide Motel's Future: Affordable Overnight or Day-Use?
- Retain Parking, Boost Public Transport Access & Manage Traffic



PROJECT GOALS = PROJECT NEEDS + PUBLIC INPUT + BEST AVAILABLE SCIENCE

Expand and restore the lagoon ecosystem; integrate public access, recreation, and visitor serving needs; and proactively address sea level rise, while protecting existing biological, cultural and recreational resources.

SPECIFIC PROJECT GOALS

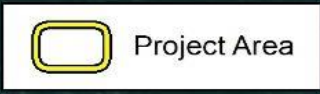
- Lagoon Ecosystem Restoration and Expansion
- Estuary Function & Water Quality Improvement
- Sensitive Species Protection
- Caltrans Bridge Replacement for Species Recovery
- Climate Resilience Enhancement
- Minimal Disruption During Construction

SPECIFIC PROJECT GOALS

- Beach Enhancement, Surf Break Protection
- Create a “Gateway Corner”: Urban/Wildlands Interface with Interpretation/Visitor Services
- Balanced Improvements:
 - Recreation Facilities
 - Emergency Services
 - Inclusive Coastal Access (ADA, Bike, Bus)



FOUR ALTERNATIVES CONSIDERED



IF WE DO
NOTHING...



ALTERNATIVE 2: MAXIMIZE LAGOON

- Bridge Passage from 79' to 460'
- Wetted and Riparian Habitat from ~0.5 to ~10 ac.
- Sandy Beach Increases ~1.2 ac.



ALTERNATIVE 3: MAXIMIZE HISTORIC

- Bridge Passage from 79' to 460'
- Restored Historical Topanga Ranch Motel
- Wetted and Riparian Habitat from ~0.5 to ~7 ac.
- Sandy Beach Increases ~1.4 ac



RCDSMM

ALTERNATIVE 4: MAXIMIZE SLR RESILIENCE

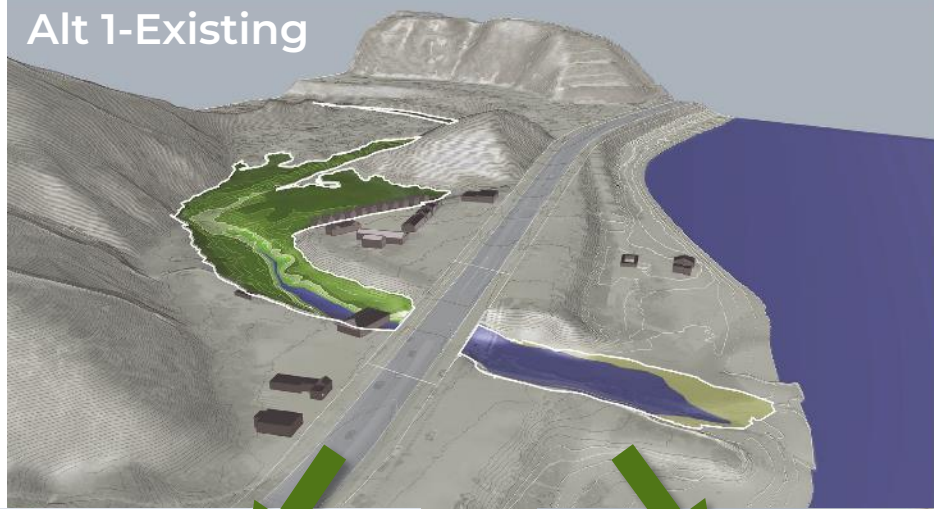
- Bridge Passage from 79' to 460'
- Realignment of PCH Northward
- Partially Restored Motel
- Wetted and Riparian Habitat from ~0.5 to ~7 ac.
- Sandy Beach Increases ~1.8 ac.



PROJECT BENEFIT: BIGGER/HEALTHIER ECOSYSTEMS

- Longer Bridge Expands Lagoon Footprint
- Improves Fish Passage & Refugia
- Fill Removal Restores Natural Topography/
Increases Available Habitat
- More “Freedom Space”/ Resiliency
- Nearshore Benefit
- Degraded Habitats Restored

Alt 1-Existing



Alt 2-Maximize Restoration



Alt 3-Maximize Historic

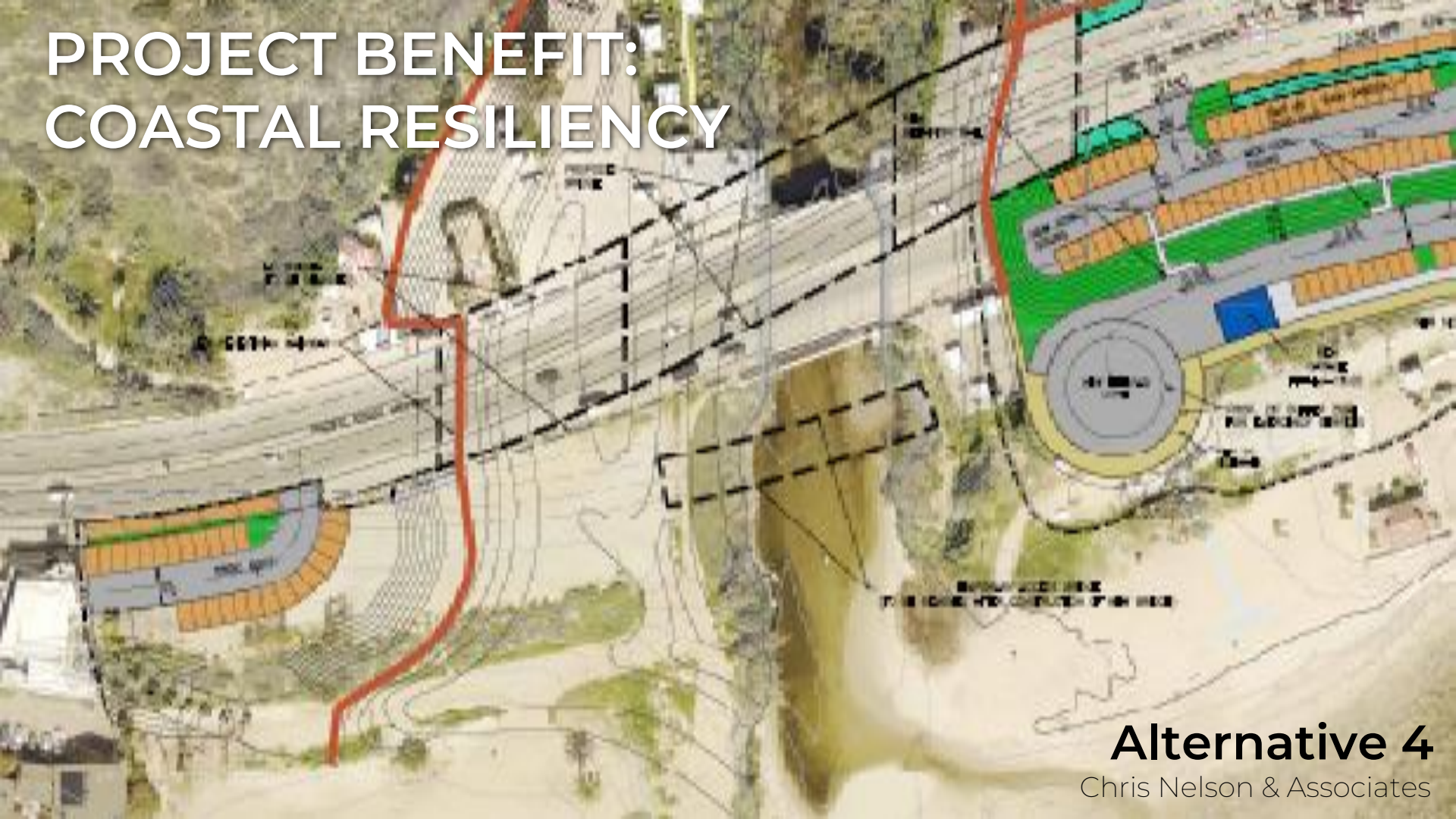


PROJECT BENEFIT: COASTAL RESILIENCY

- Improved Emergency Response
- Nearshore Nourishment
- Increased Beach Widths
- Relocates Structures for SLR



PROJECT BENEFIT: COASTAL RESILIENCY



Alternative 4

Chris Nelson & Associates

OPPORTUNITY FOR NEW BEACH HABITAT



Existing Beach View
Looking East



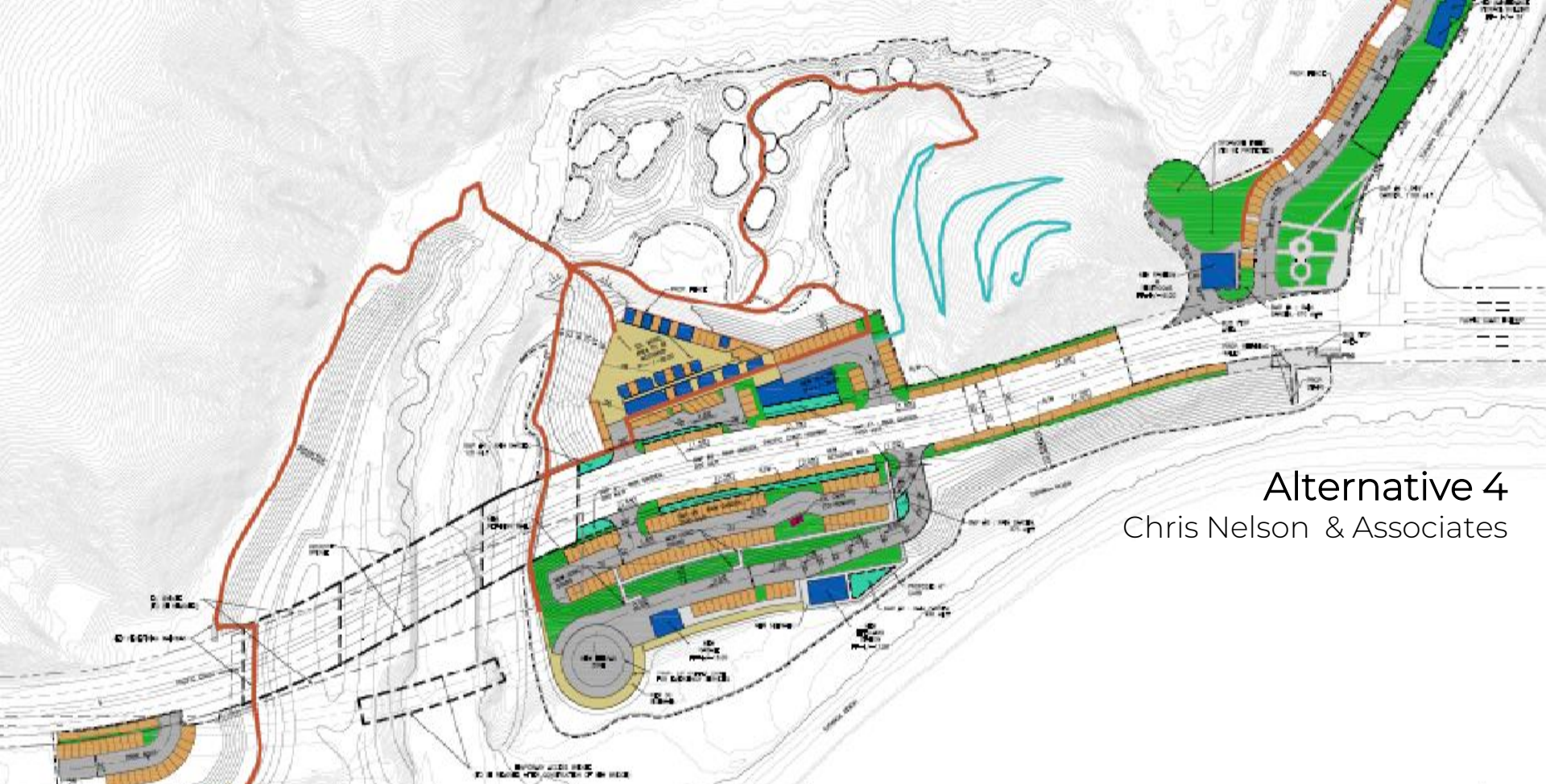
Simulated View of
Alternative 4

PROJECT BENEFIT: COASTAL ACCESS IMPROVEMENTS

- Expanded/Coordinated Parking Options
- Improved Bus Stop and Biking Amenities



Alternative 2
Chris Nelson & Associates



Alternative 4
Chris Nelson & Associates

PROJECT BENEFIT: INTEGRATED TRAIL SYSTEM

PROJECT BENEFIT: IMPROVED VISITOR EXPERIENCE

- New “Gateway Corner” Visitors Hub
- New Interpretive Features
- Expanded Access into Lower Topanga State Park
- Potential for Increased Day Use or Low Cost Overnight Accommodations
- Park Visitor Serving Concessions Opportunities



PROJECT BENEFIT: CULTURAL RESOURCES

- Identifies Plan for Topanga Ranch Motel
- Provides Interpretation of Cultural Resources
- Protects Tribal Cultural Resources



PROJECT BENEFIT: IMPROVED WASTEWATER MANAGEMENT

- Current DPR System Outdated
- Onsite Treatment or Sewer Options
- Onsite Options Include Seepage Pits or SDI
- Sewer Options: Connection to LA Co. System at Sunset Mesa or along PCH
- Field Testing This Summer





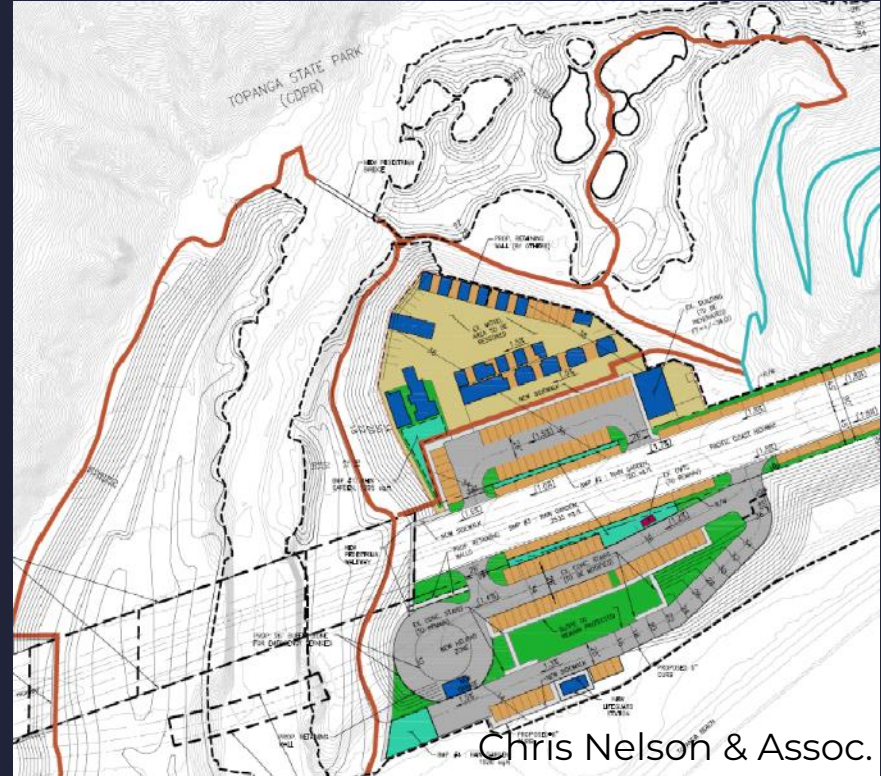
LEGEND

- EXISTING SEWER LINE
- PROPOSED SEWER LINE
ALTERNATIVE 2 OPTION 1
- PROPOSED INFILTRATION AREA
ALTERNATIVE 2 OPTION 2
- PROPOSED SEWER LINE
ALTERNATIVE 3 & 4 OPTION 1
- PROPOSED SEWER LINE
ALTERNATIVE 3 & 4 OPTION 2
- STATE ENCROACHMENT

WASTEWATER TREATMENT OPTIONS

MINIMIZE HARM DURING CONSTRUCTION

- Grading Outside of Wetted Channel to Protect Fish
- Native and Mature Trees Avoided
- Excavation Buffers for Cultural Resources



MINIMIZE CONSTRUCTION HASSLES

- Commute Protected: 4 PCH Lanes Open
- Provide Coastal Access and Parking at All Times



TOTAL PARKING SPACES :
TOPANGA LAGOON ZONE 112
TCB RECREATIONAL ZONE 115
TOTAL 227

Michal Sotona

EMERGENCY ACCESS PRESERVED



PROJECT STATUS/TIMELINE

- **2022-2024 Environmental Review**
 - Early 2024: EIR Public Comment Period
 - June 2024: EIR Finalized
- **2024-2026 Design Phase**
 - Complete Design for Preferred Alternative & Permit Applications
- **2027-2030 Construction**
- **2030-2035 Post-Construction Monitoring**



THANK YOU!

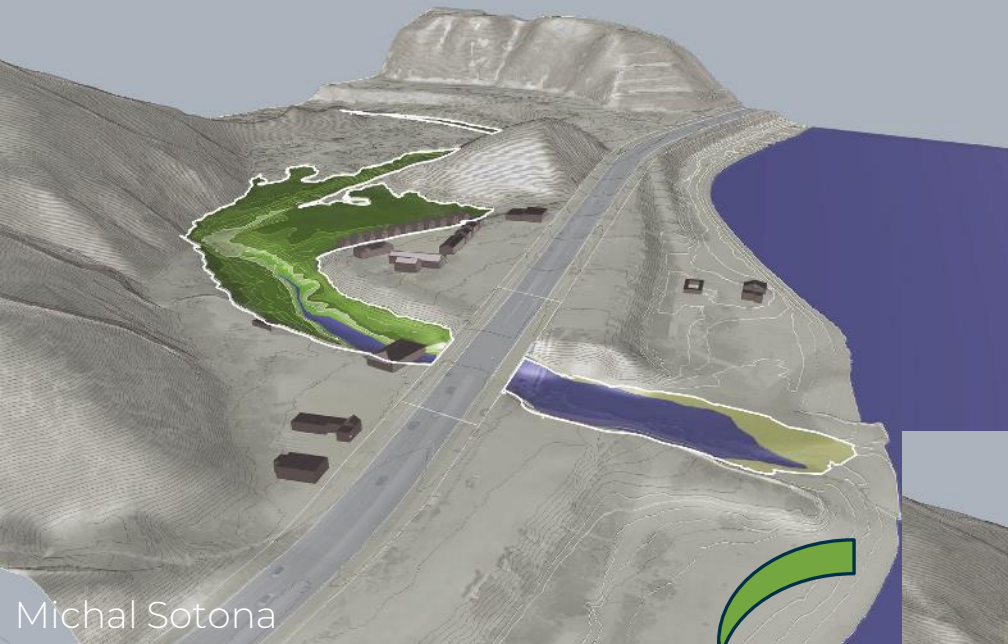


**Assemblymember
Richard Bloom**

FOR MORE INFORMATION

- Visit Project Website:
rcdsmm.org/topanga-lagoon-restoration
- Submit Questions or Get on Mailing List Under
“Stay Connected” Tab
- Email Us:
TopangaLagoonRestoration@gmail.com
- Comments/Requests Will Be Directed
to the Correct Project Team Member





Michal Sotona

IMAGINE!



Michal Sotona

QUESTIONS?

Alternating Online vs In-Person
2 Minutes Maximum
Please Be Respectful

02:00