

RE-IMAGINE THE FUTURE OF LOWER TOPANGA



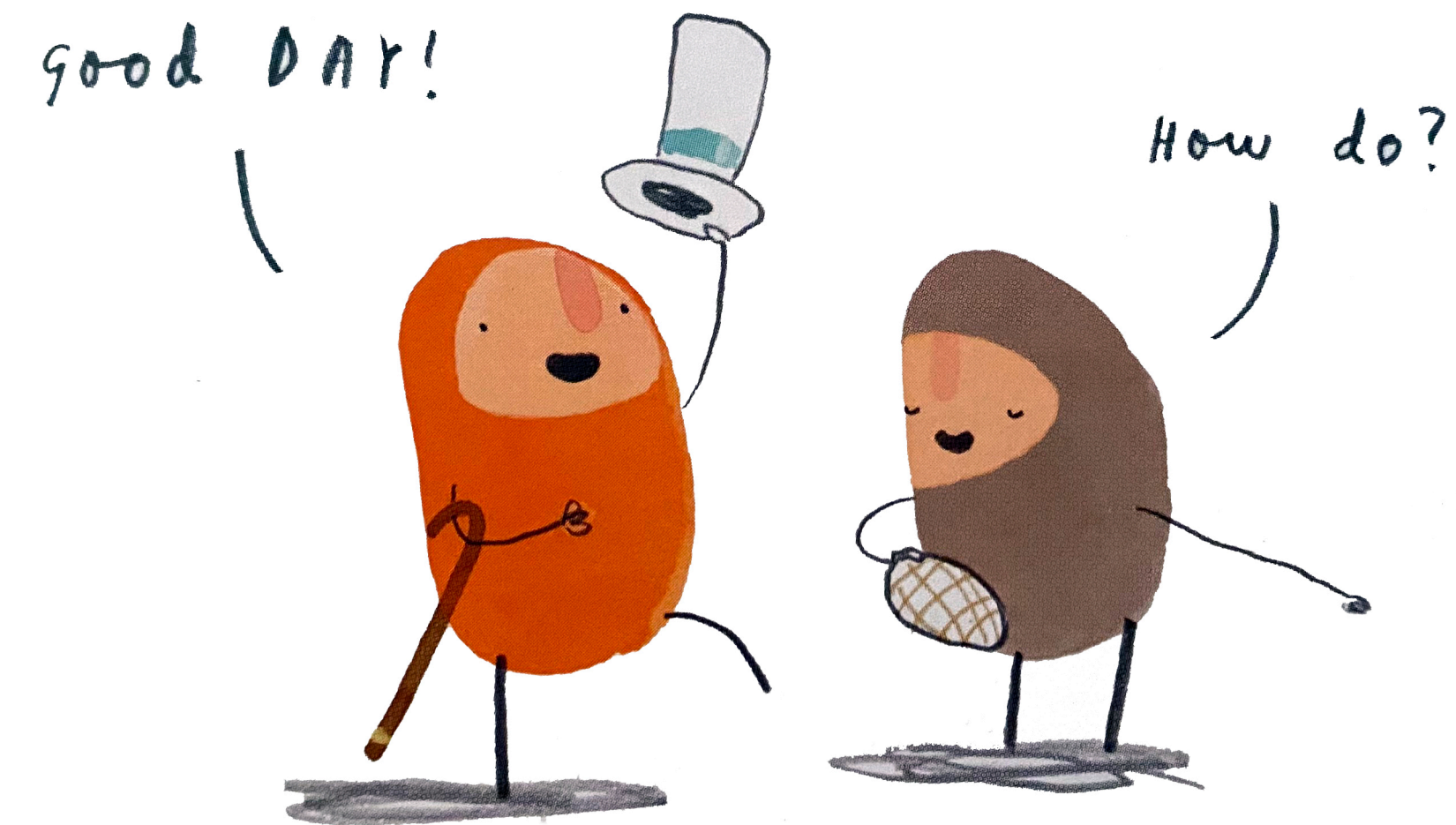
PUBLIC MEETING
FEBRUARY 29, 2020

AGENDA

- 10:00 INTRODUCTIONS, PROJECT BACKGROUND
- 10:40 WORKSHOP- DESIGN YOUR VISION FOR LOWER TOPANGA
- 11:20 PRESENT COMMUNITY GROUP DESIGNS
- 11:50 WRAP UP AND NEXT STEPS

INTRODUCTIONS, ROLES

- CALIFORNIA STATE PARKS
LANDOWNER, CO-LEAD
- RESOURCE CONSERVATION DISTRICT OF THE SANTA MONICA MOUNTAINS (RCDSMM)
CO-LEAD
- STATE COASTAL CONSERVANCY
FUNDER/PARTNER
- MOFFATT & NICHOL
CONSULTANT
- ENVIRONMENTAL SCIENCE ASSOCIATES
CONSULTANT
- OTHER PUBLIC AGENCIES
- MEMBERS OF THE PUBLIC



TIMELINE* AND MILESTONES

*ESTIMATED

PHASE 1

NOW: Gather information and input
Work with Caltrans to develop bridge plan

FALL 2020: Public meeting to review and refine preliminary concept alternatives

FALL 2021: Public meeting to finalize concept alternatives

WINTER 2022: 30% Conceptual Plan completed

PHASE 2

2022-2024: Secure funding for preparing 65% design and CEQA documents

PHASE 3

2024-2026: Circulate CEQA, obtain permits, finalize 100% design

PHASE 4

2027: Construction begins, estimated duration 2-3 years

PROJECT GOALS

- DEVELOP AN INNOVATIVE, INTEGRATED DESIGN, IN COOPERATION WITH PROJECT PARTNERS, PUBLIC AGENCIES AND MEMBERS OF THE PUBLIC
- SEA LEVEL RISE ADAPTATION
- RESTORE HABITAT, PROTECT NATIVE SPECIES
- IMPROVE WATER QUALITY
- ENHANCE RECREATIONAL OPPORTUNITIES
- ENHANCE VISITOR SERVICES
- IMPROVE EMERGENCY RESPONSE

PROJECT PLANNING AREA

NOTE: PLANNING AREA IS NOT THE SAME AS THE AREA OF WORK



WATER QUALITY

- Heal the Bay rated C- F for wet weather at lagoon mouth
- Listed for coliform bacteria at Topanga Beach
- Source of problem at the beach not from upstream
- No nutrient problems
- Sediment movement
- Seasonal algal blooms
- Minimal water harvesting
- Natural flow regime



NATIVE FISHES



GRUNION

Karen Martin



TIDEWATER GOBY

RCDSMM Stream Team

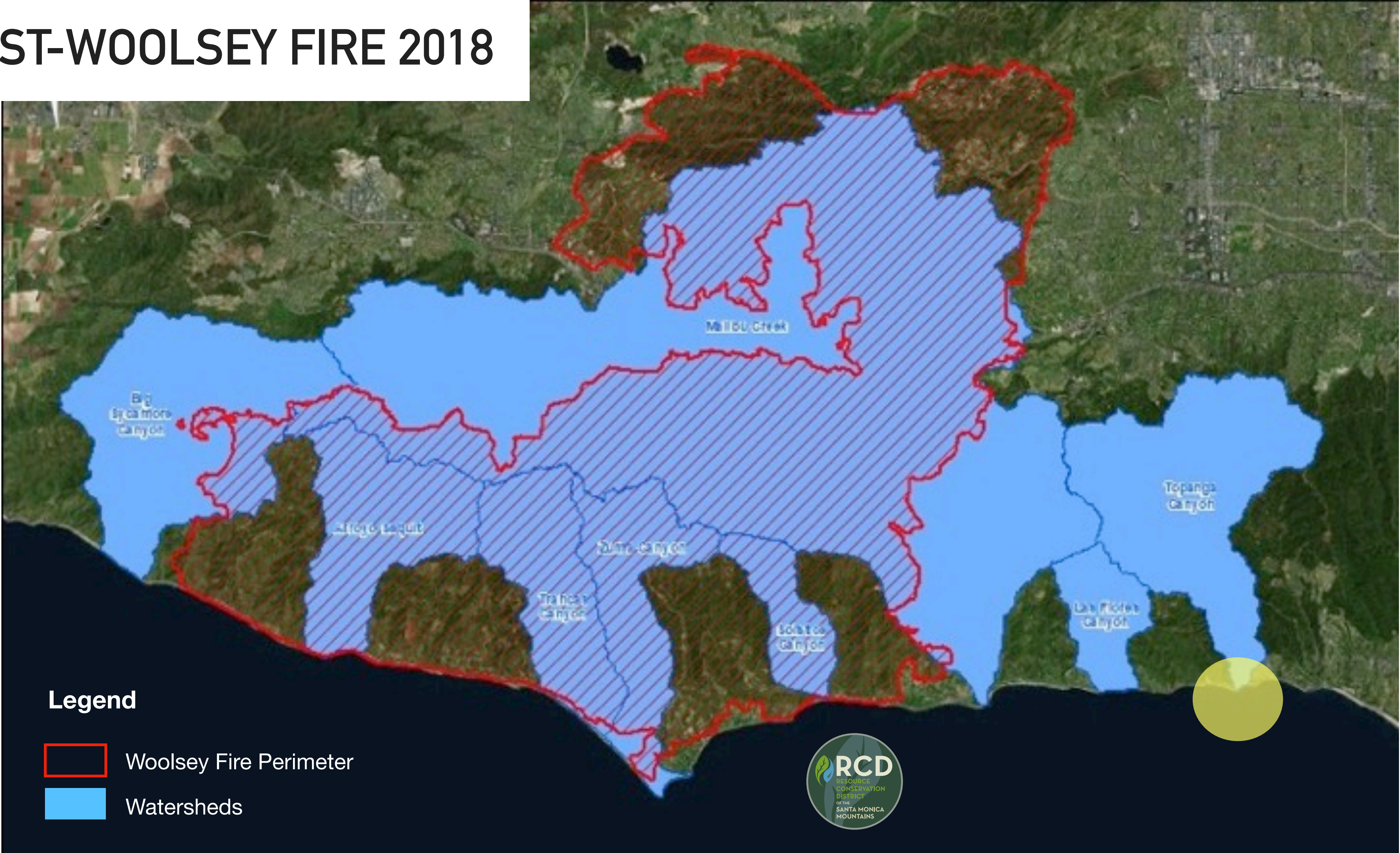


STEELHEAD TROUT

RCDSMM Stream Team

STEELHEAD AND GOBY DISTRIBUTION IN THE SANTA MONICA BAY

POST-WOOLSEY FIRE 2018





Courtesy of Topanga Democratic Club

IMPORTANT EMERGENCY RESPONSE AREA

MEDICAL EVACUATIONS

Existing Helipad

Courtesy of California Beaches



Courtesy of Topanga Historical Society

2012 TOPANGA GENERAL PLAN GOALS

LOWER TOPANGA ZONE

- Natural gateway into park with minimal built structures
- Overnight lodging and concessions
 - Evaluate opportunities for adaptive reuse of Topanga Motel
- Lagoon restoration
- Visitor use and interpretive opportunities

TOPANGA STATE PARK GENERAL PLAN 2012



RECREATION AND VISITOR SERVICES

GOALS, OPPORTUNITIES, CONSTRAINTS

- Parking!
- Surf check opportunities from PCH
- Pedestrian access under PCH to beach
- ADA accessibility
- Interpretive signs
- Trails
- Picnic area(s)
- Restrooms
- Restaurants and shops
- Visitor Center
- Ranch Motel- low cost accommodations
- And...?

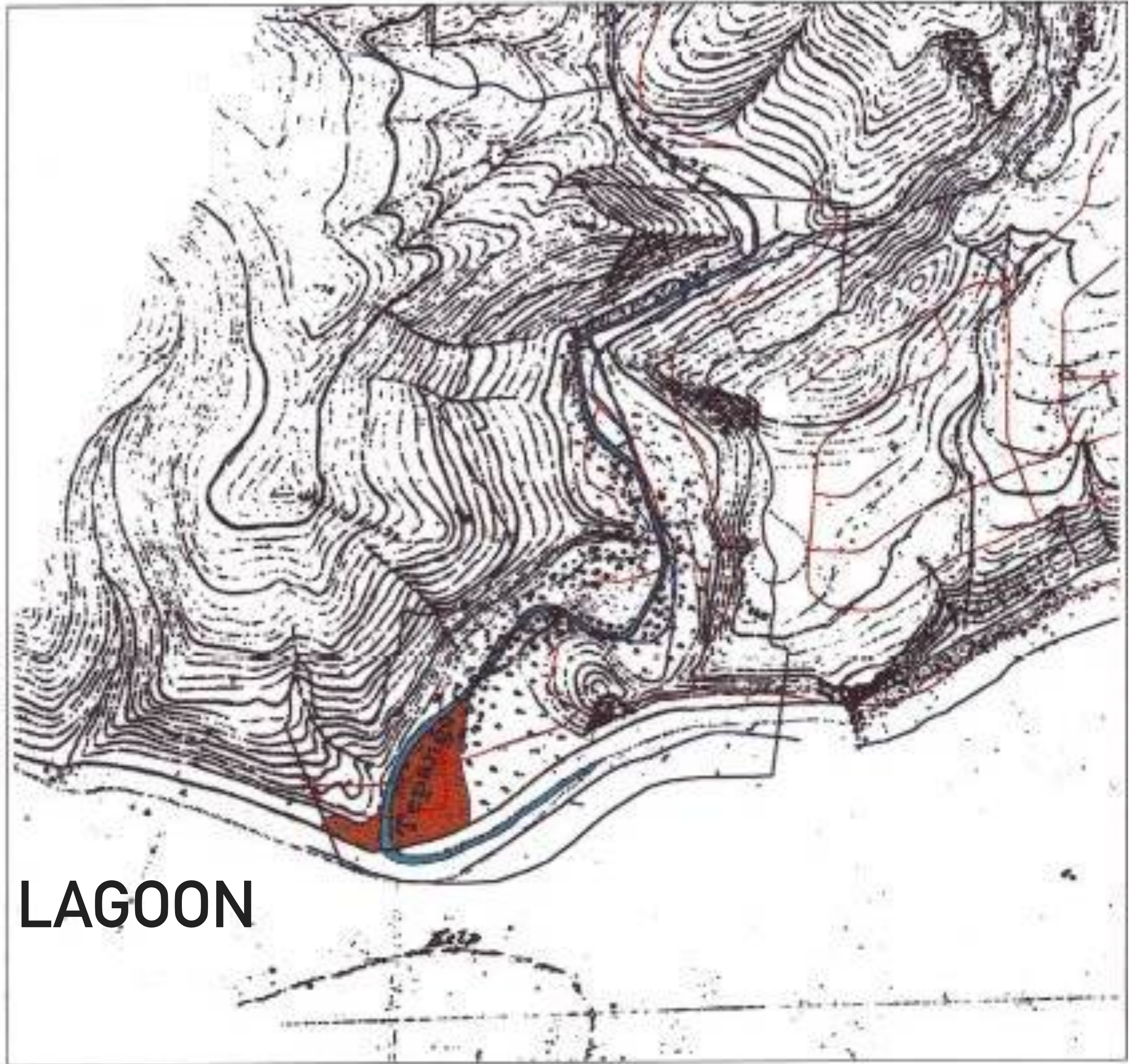


EMERGENCY SERVICES

GOALS, OPPORTUNITIES, CONSTRAINTS

- Lifeguard and ranger access
- Vehicular turnaround during road closures
- Helicopter evacuation





TOPANGA BEACH AND LAGOON
MAP DATE: 1876

VIEW N FROM HILLTOP: 1900'S



VIEW N FROM HILLTOP: 2019





Courtesy of Randy Young Collection

TOPANGA LAGOON: C. 1910

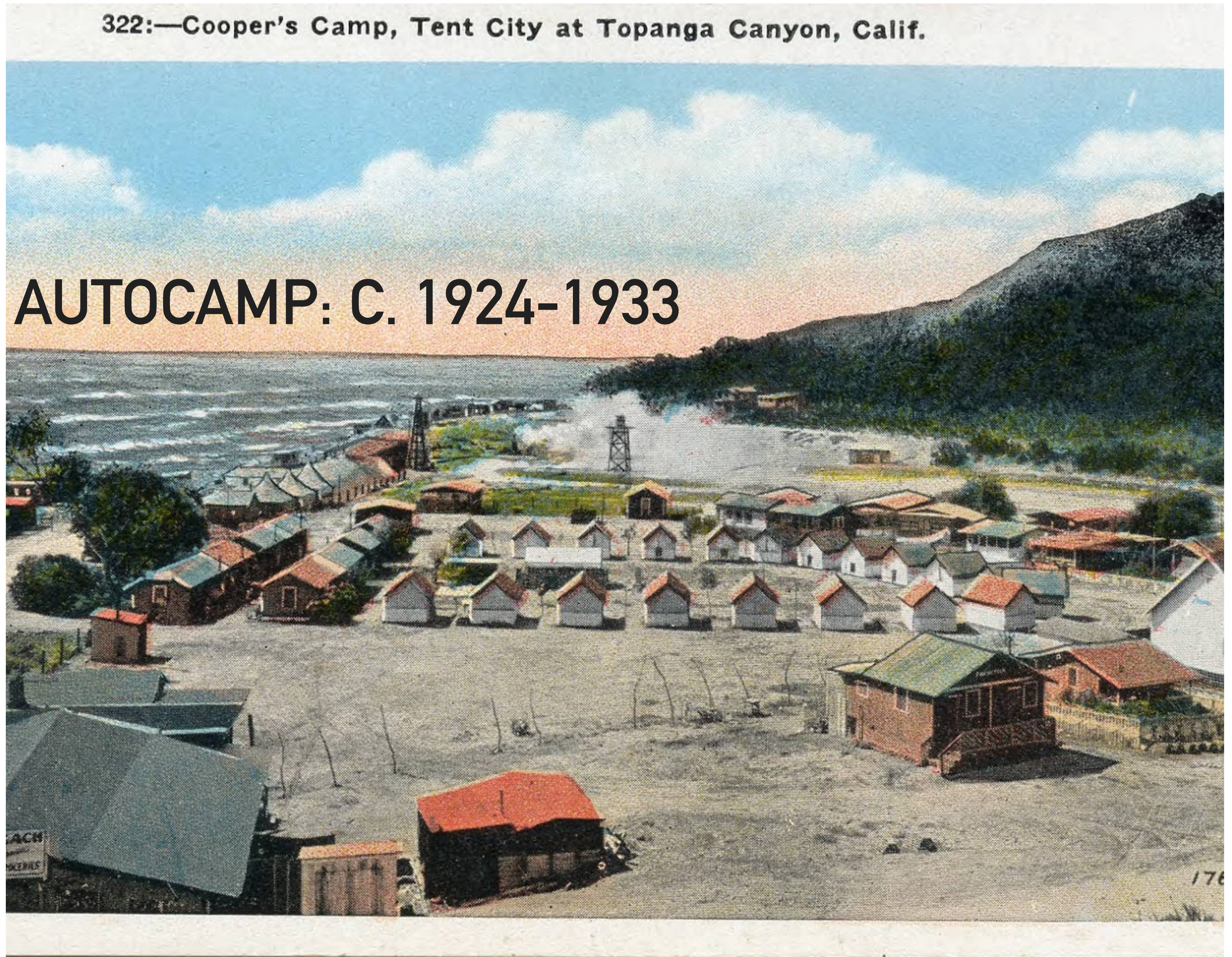


Courtesy of SM Library Archives

TOPANGA LAGOON BEACH: EARLY 1920'S

322:—Cooper's Camp, Tent City at Topanga Canyon, Calif.

COOPER'S AUTOCAMP: C. 1924-1933



ROOSEVELT HIGHWAY: C. 1927-1933



Courtesy of Fairchild Collection



Courtesy of Los Angeles Times Photographic Archives, UCLA

HIGHWAY WIDENING: 1933

NARROWED CREEK: 1940



Courtesy of Spence Collection, UCLA Department of Geography



Courtesy of Topanga Historical Society

TOPANGA RANCH MOTEL: 1930'S



TOPANGA RANCH MOTEL: 2019

RANCH MOTEL: FUTURE

- Early 2000s, initial planning began for restoration of Topanga Lagoon
- 2019, new funding for restoration planning
- 2019, Condition Assessment of Motel in anticipation of funding for low-cost accommodations



CULTURAL/HISTORIC RESOURCES

GOALS, OPPORTUNITIES, CONSTRAINTS

- Pre-1933 fill era archeological resources
- Topanga Ranch Motel
- Interpretation



TOPANGA CREEK MOUTH AND LAGOON

CLOSED IS THE MOST COMMON
CONDITION



RCDSMM Stream Team, 14 November 2014

OPEN AND CONNECTED IS DEPENDENT
ON RAINFALL AND CREEK FLOWS



RCDSMM Stream Team, 15 January 2019

LAGOON DYNAMICS



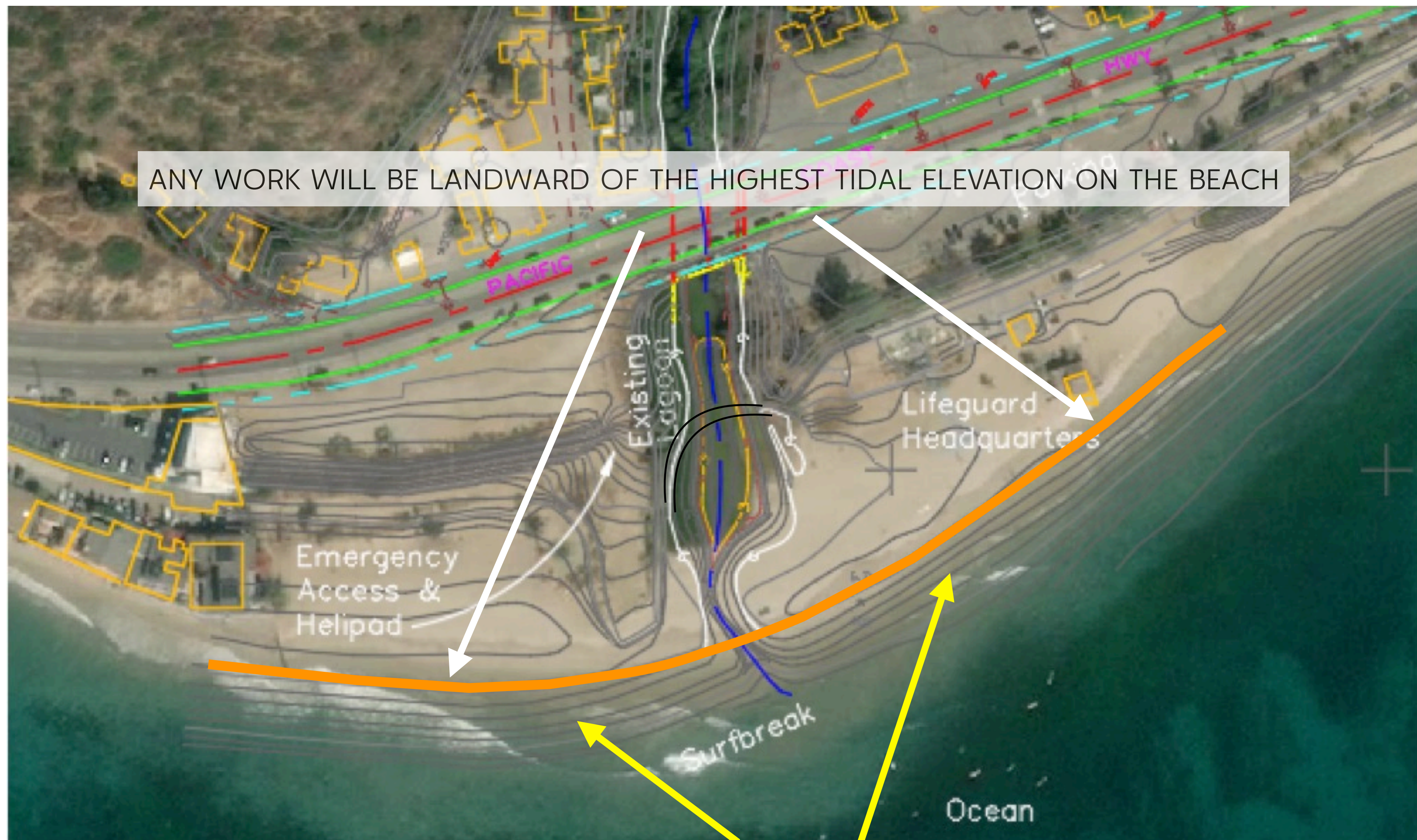
Wave power builds up beach faster than lagoon water level can rise- mouth closes

Water fills lagoon faster than evaporation and seepage can drain it- mouth opens







NO CHANGES TO BATHYMETRY OR OCEAN SWELL EXPOSURE



NO CHANGES TO BEACH PROFILE OR BEACH SLOPE CONTOURS

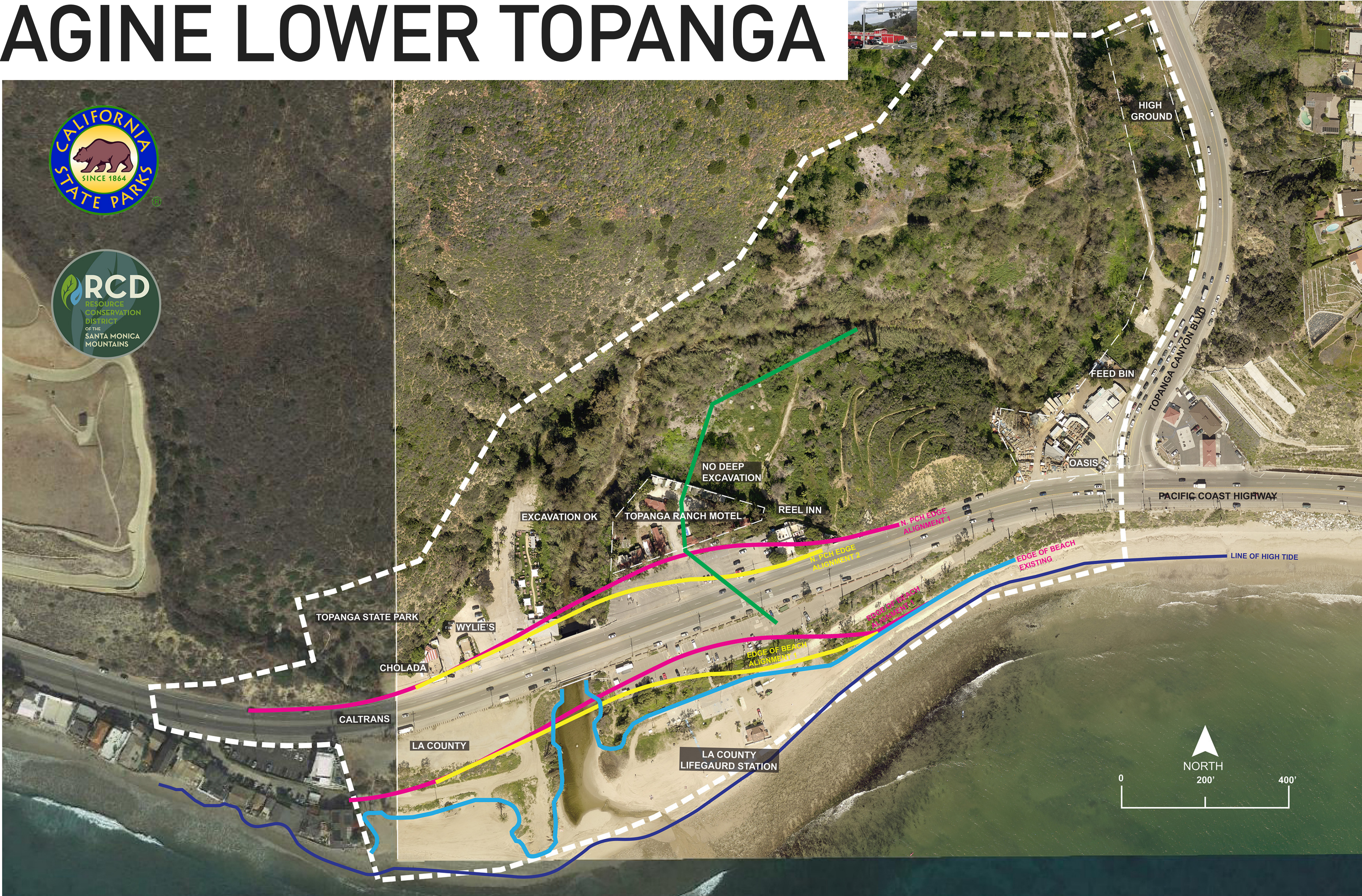
USGS CoSMoS 3.2ft (1m) SLR

-  Annual Storm, Maximum Inundation
-  Annual Storm, Minimum Inundation

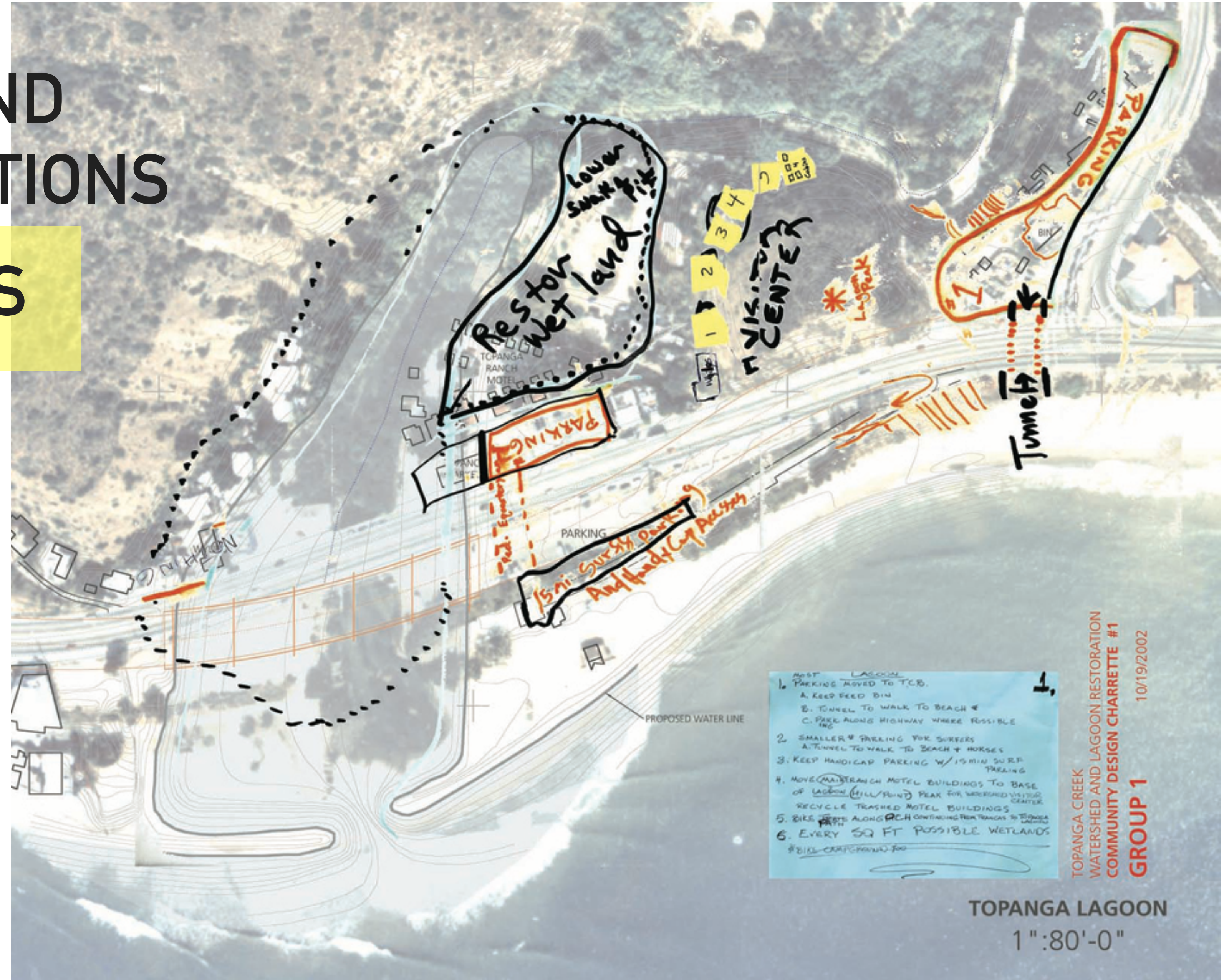
USGS SEA LEVEL RISE INUNDATION MAP

3.2 FT (1M) OF RISE WITH AN ANNUAL STORM WAVE CONDITION

RE-IMAGINE LOWER TOPANGA



YOUR IDEAS AND RECOMMENDATIONS SEE HANDOUTS



DESIGN WORKSHOP

PLEASE FILL OUT COMMENT CARD

STICKY NOTES

KEEP IN MIND AS YOU WORK,
PROJECT GOALS, OPPORTUNITIES, AND CONSTRAINTS:

SEA LEVEL RISE

ECOLOGICAL

WATER QUALITY

CULTURAL/HISTORIC RESOURCES

ACCESS AND RECREATION

VISITOR SERVICES

EMERGENCY ACCESS/SERVICES

STICKERS

AND PLEASE:

SUPPORT EVERYONE'S PARTICIPATION AND
RESPECT OTHER PERSPECTIVES

THANK YOU FOR YOUR PARTICIPATION!

PUBLIC PARTICIPATION

WWW.RCDSMM.ORG/RESOURCES/TOPANGA-LAGOON-RESTORATION/

IDEAS...



MEETING FOLLOW UP:

SUBMIT ADDITIONAL WRITTEN COMMENTS NO LATER THAN APRIL 1ST VIA WEBSITE

COMMENT FORMS AND DRAFT BASE PLAN AVAILABLE TO DOWNLOAD FROM WEBSITE

MEETING MINUTES WILL BE POSTED ON WEBSITE

FUTURE PUBLIC MEETINGS

FALL 2020*

FALL 2021*

*LOCATION TBD

STAY INFORMED

SIGN UP FOR EMAIL UPDATES