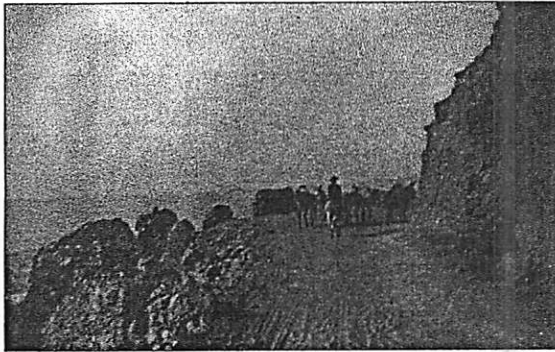


SECTION 11
LOOKING BACK:
Recommendations from the 1996 Draft
Topanga Creek Watershed Management Study that have been accomplished



TOPANGA HISTORICAL SOCIETY



TOPANGA HISTORICAL SOCIETY

SECTION 11
LOOKING BACK:
Recommendations from the 1996 Draft
Topanga Creek Watershed Management
Study that have been accomplished

The following list of recommendations taken from the 1996 Draft Topanga Creek Watershed Management Study have already been implemented.

Economics

- Community groups (Topanga Chamber of Commerce and the Topanga Canyon Town Council) meet regularly and facilitate discussion on topics of concern, such as traffic management, septic and water quality regulations, etc.

Education and Outreach

- Provide the *Living Lightly in the Watershed* information in the *Topanga Messenger* 455 Yellow pages and as a brochure sent to all residents.
- Provide regular updates on the watershed committee on TopangaOnline web site.
- Create an emergency warning and evacuation system for those bridges and major roadways where a substantial public safety hazard exists. This is especially important for the Topanga Elementary School.
- Hold an annual public meeting to discuss watershed management concerns.
- Distribute brochures with “user friendly” information on water quality, vegetation management, flood hazard reduction, maintenance of slope stability, etc.
- Publish a series of articles in the *Messenger* newspaper on the watershed plan.
- Provide information to new buyers about landscaping with native plants and protecting native habitat available through Realtors, brochures, etc.
- Publish articles in the news whenever possible.
- Coordination with Topanga Elementary School for school/studies projects tied to watershed issues.

Flood and Fire Hazard Protection

- Conduct a research study to understand geomorphologic process effecting sediment transport and loading. (Research in progress Fall 2000–Fall 2001, conducted by RCDSMM).
- Conduct upslope and instream sediment and erosion studies. (Research in progress Fall 2000–Fall 2001, conducted by RCDSMM).

Land Use: Grading, Drainage and Erosion Control

- None

Natural Environment

- The stream gage in Topanga Creek should be re-established by LA County DPW.
- In compliance with the LA County Oak Tree Protection Ordinance, any work done within the protected zone of an oak or any other trees within 50 feet of a stream bank should be done by hand. No stockpiling of dirt or equipment should be permitted within the protected zone.
- Documentation of existing riparian vegetation should be performed prior to any grading activities. Need to continue coordination and codify.
- The services of a consulting biologist/arborist should be sought prior to and during both the design and implementation phases of all projects. Specified monitoring following completion of construction is also recommended.
- Require that plants and animals be protected during any construction within or adjacent to the stream channel.
- Reduce impacts by coordinating line clearance pruning among all concerned agencies. Need to continue coordination and codify.
- Prohibit pruning between January and April in order to protect nesting raptors. Need to continue coordination and codify

Recreation

- None

Transportation

- Environmental Corridor Study of Topanga Canyon Blvd. by Caltrans to develop appropriate management strategies in process. (2000-2001)
- Traffic Study along Topanga Canyon Blvd. in progress.

Water Quality

- Perform a baseline water quality study and monitor changes yearly. (Study conducted from 1999–2001 by the RCDSMM and Topanga Creek Stream Team.)
- Identify the major sources of pollution and develop realistic programs to address them.
- Establish a policy that limits stormwater runoff and sedimentation from new development to that which occurs over naturally existing terrain under all conditions.

RECOMMENDATIONS THAT ARE NO LONGER RELEVANT DUE TO CHANGES SINCE 1996

- Require DPW to do a comparative analysis of Community Rating System credit points for the proposed Topanga Creek Watershed Management Plan and the Proposed Topanga Floodway Ordinance.
- DPW should incorporate into its capital improvements program the replacement of undersized bridges. REMOVE RECOMMENDATION.